

# MONTHLY MEMBERSHIP PROGRESS REPORT

LOCATION INDIA

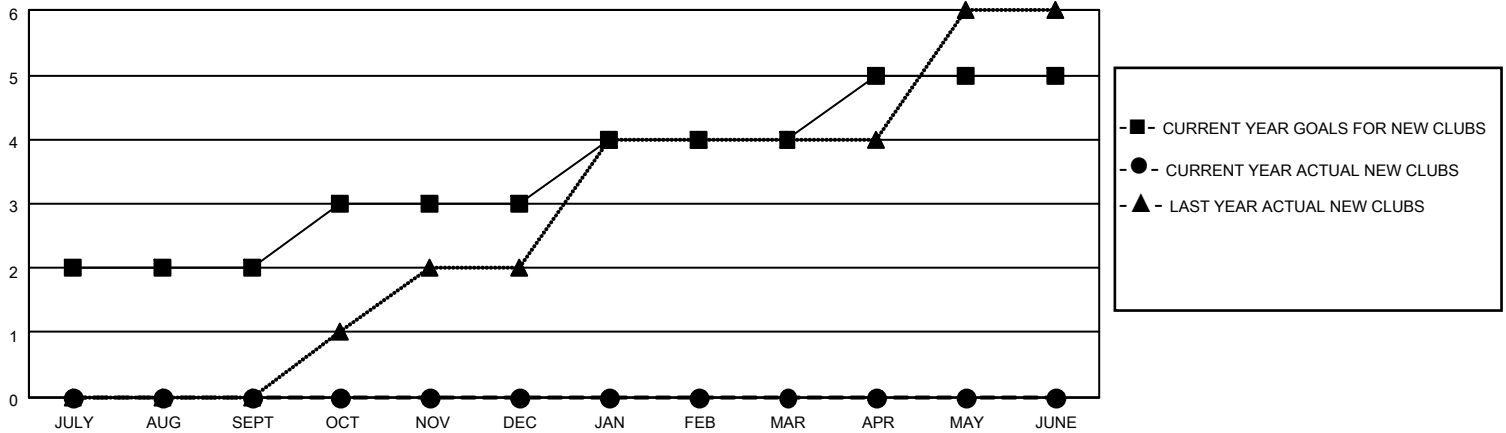
District 321A1

Results as of: 5/31/2023

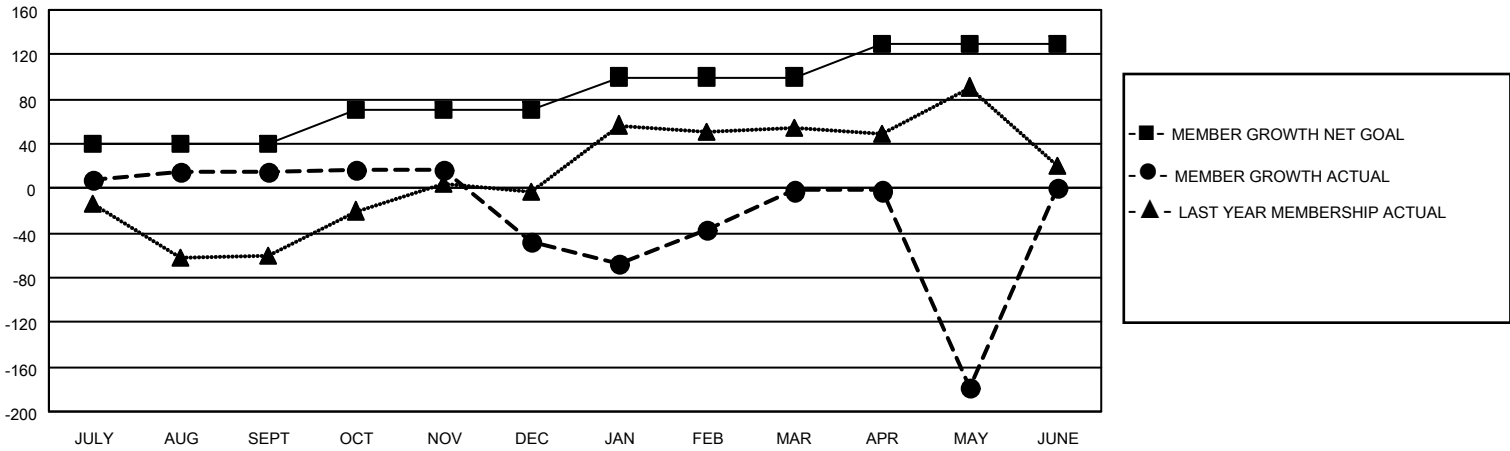
Clubs			
RESULTS FOR 2022-2023			
QUARTER	NEW CLUB GOAL	NEW CLUBS	DROPPED CLUBS
JULY/AUG/SEPT	2	0	0
OCT/NOV/DEC	1	0	3
JAN/FEB/MAR	1	0	1
APR/MAY/JUNE	1	0	0

Members			
RESULTS FOR 2022-2023			
QUARTER	MEMBER GROWTH NET GOAL	MEMBER GROWTH ACTUAL	DROPPED MEMBERS ACTUAL (including transfers)
JULY/AUG/SEPT	40	67	42
OCT/NOV/DEC	30	42	95
JAN/FEB/MAR	30	120	42
APR/MAY/JUNE	30	30	196

**GOALS AND ACTUAL NEW CLUBS CUMULATIVE**



**GOALS AND ACTUAL MEMBERS CUMULATIVE**



<p><b>DROPPED CLUBS: 4</b></p>	<p><b>30 CLUBS OF 58 ADDED 1 OR MORE NEW MEMBERS</b></p>	<p style="text-align: center;"><u>GENDER DISTRIBUTION</u></p> <p>MALE 1,107 (69.06%)                  FEMALE 496 (30.94%)                  NON BINARY 0 (0.00%)                  PREFER NOT TO ANSWER 0 (0.00%)</p>
<p><u>DROPPED MEMBERS</u></p> <p>DECEASED 7                  CLUB CANCELLED 69                  OTHER 299  <b>TOTAL 375</b></p>	<p><a href="#">CLICK HERE FOR CUMULATIVE MEMBERSHIP DATA</a></p>	<p>TOTAL FAMILY UNIT MEMBERS 720                  FAMILY MEMBERS PAYING HALF DUES 425</p>